

Sustainability Programs Update

January-June
2024

Jessica Kneifl
Specialist, Energy Services
July 19, 2024

Summary Headlines



Obligated LES SEP incentives are 6% higher than last year



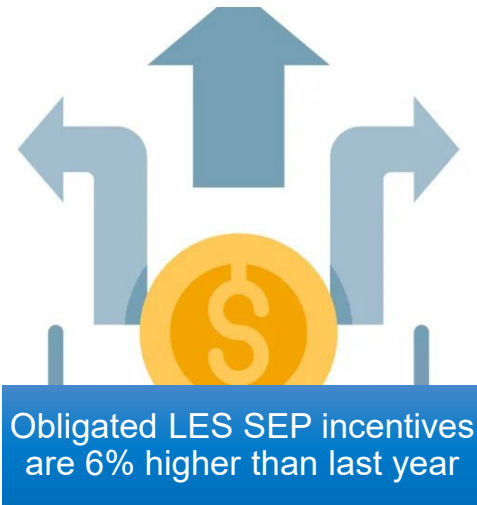
City partnership increased heat pump installs significantly



Peak demand reduction is close to Q1-Q2 target

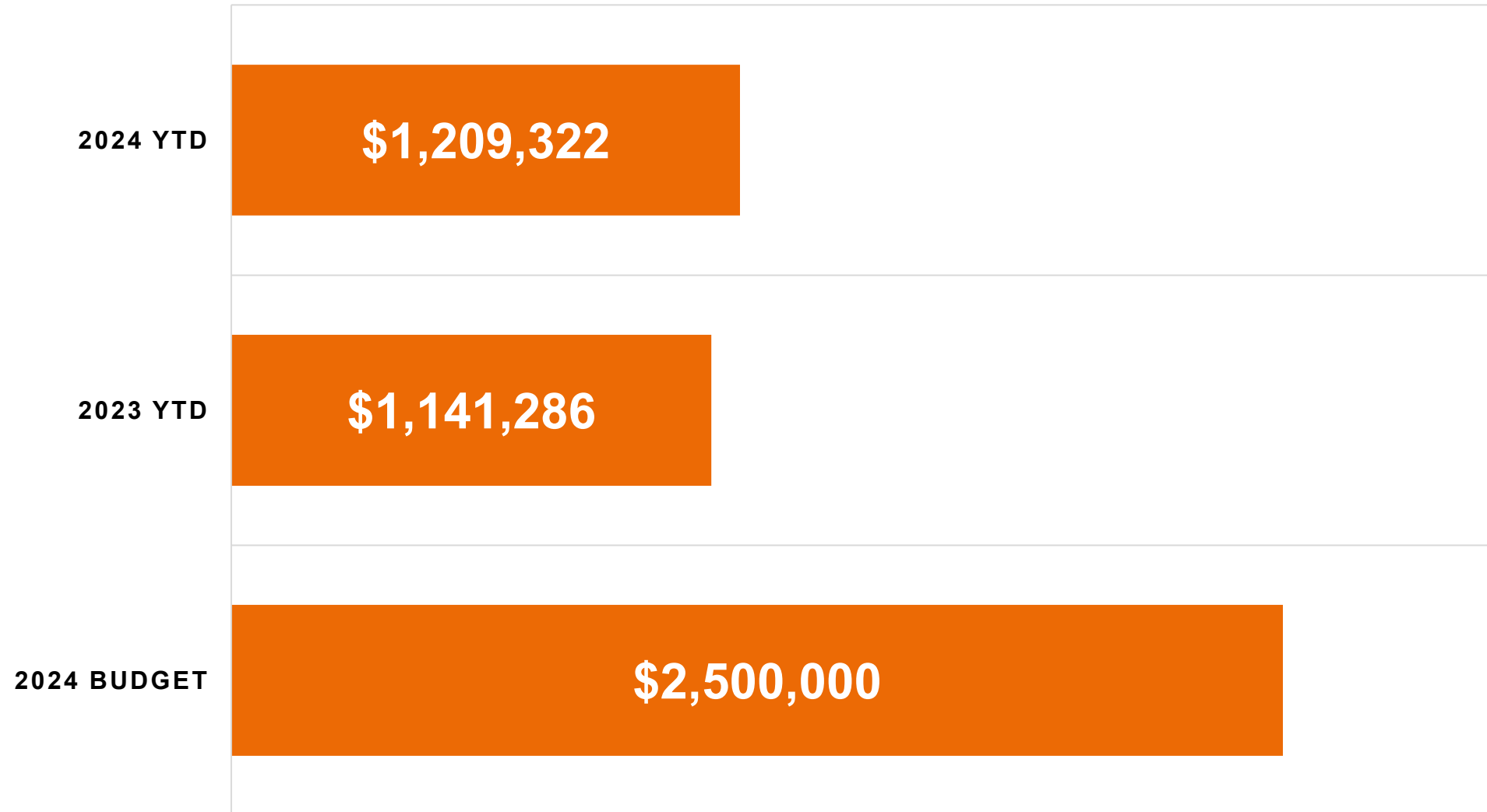


Collaboration to assist energy burdened continues



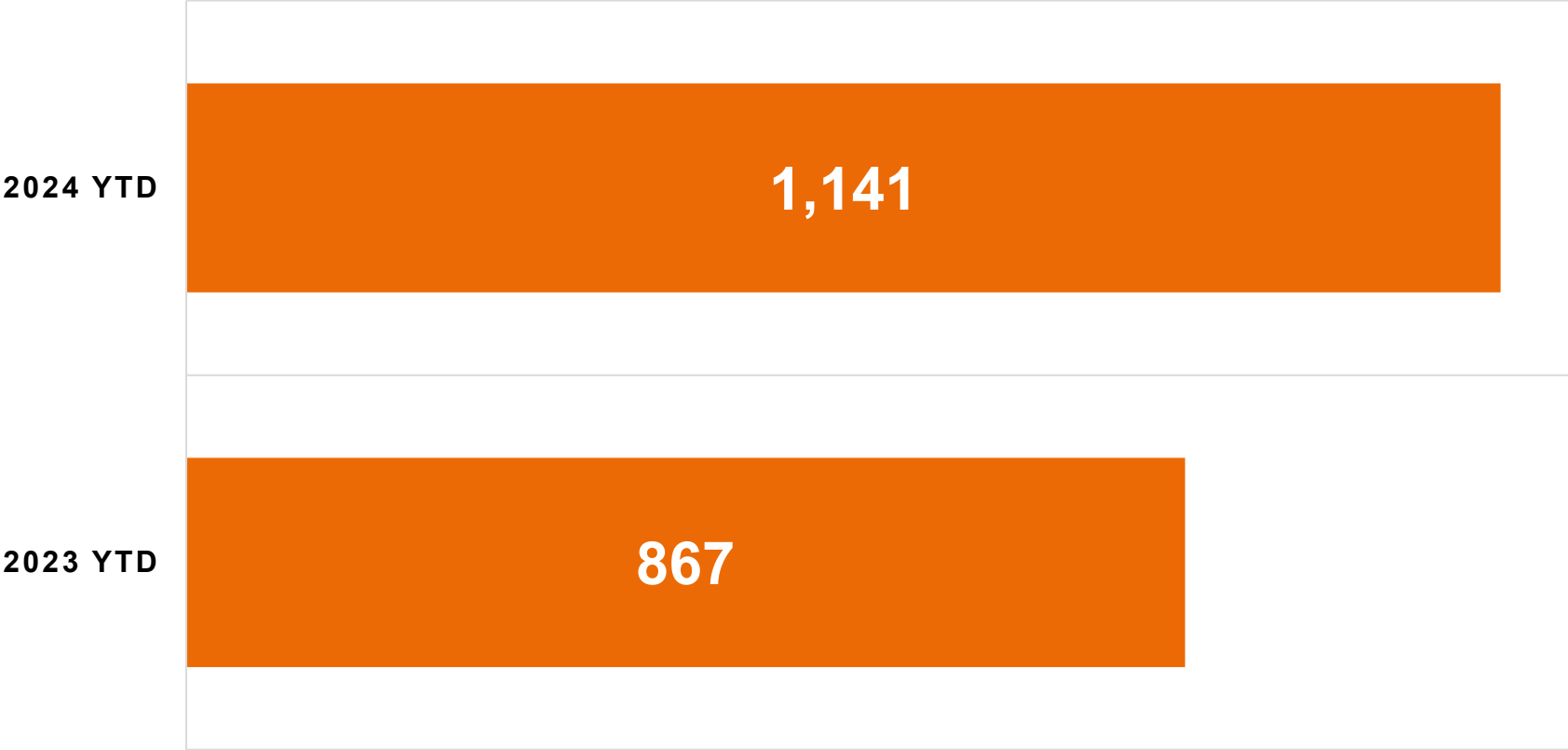
Sustainable Energy Program (SEP)

INCENTIVES



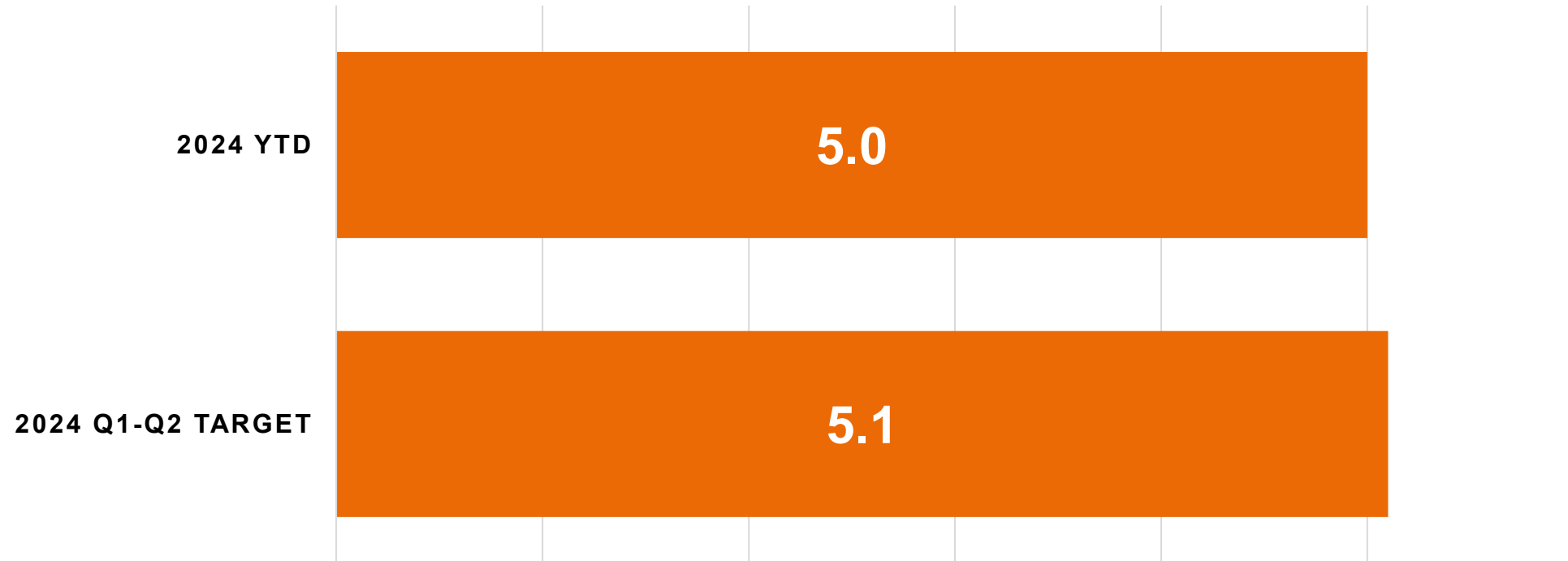
PROJECTS

(YEAR OVER YEAR)



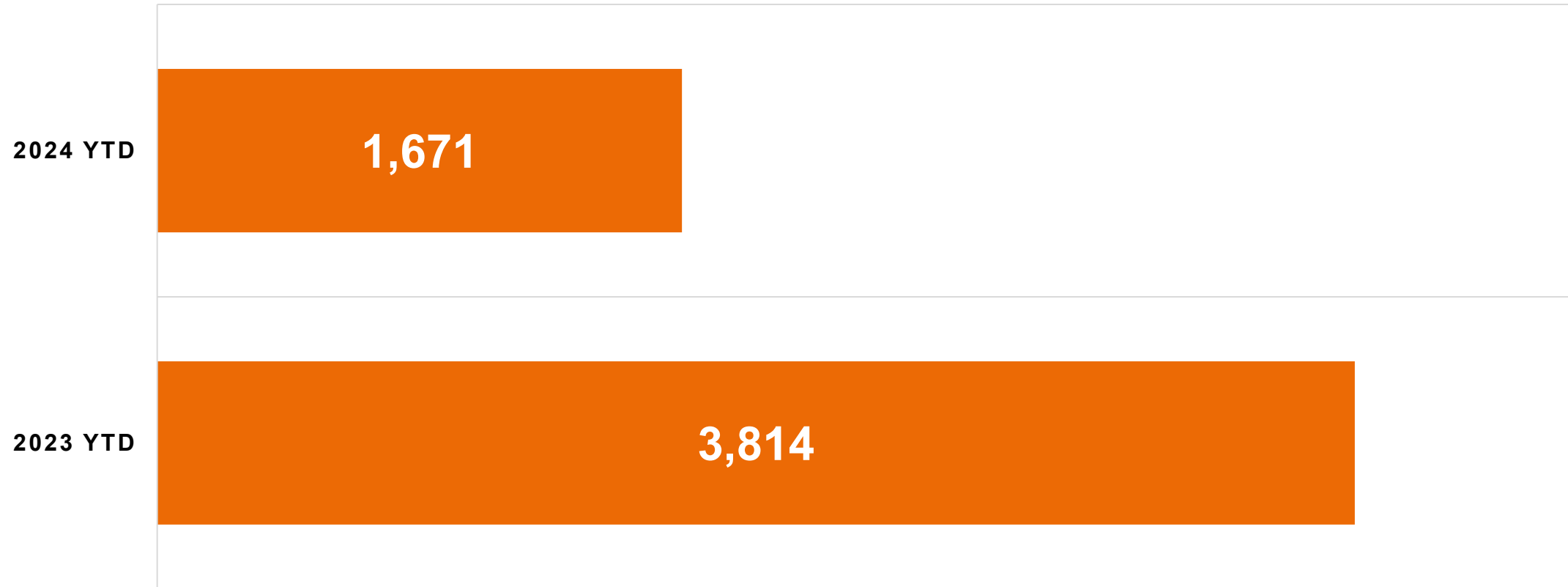
- High-Efficiency Air Conditioner and Heat Pump Projects ▲ 43% from last year

NET PEAK DEMAND REDUCTION (MW)



- Approximately 200 new Peak Rewards subscribers since the beginning of 2024
- Total Peak Reward enrollments: 3,800

NET ENERGY REDUCTION (MWH)



The decrease between 2024 and 2023 can be explained by:

- Phasing out the Lighting program and establishing a \$5,000 cap per customer.
- We have not had many large Commercial and Industrial projects in 2024. In 2023, one Commercial and Industrial project alone accounted for 1320 MWH and another project accounted for another 620 MWH of savings.



City partnership increased
heat pump installs significantly

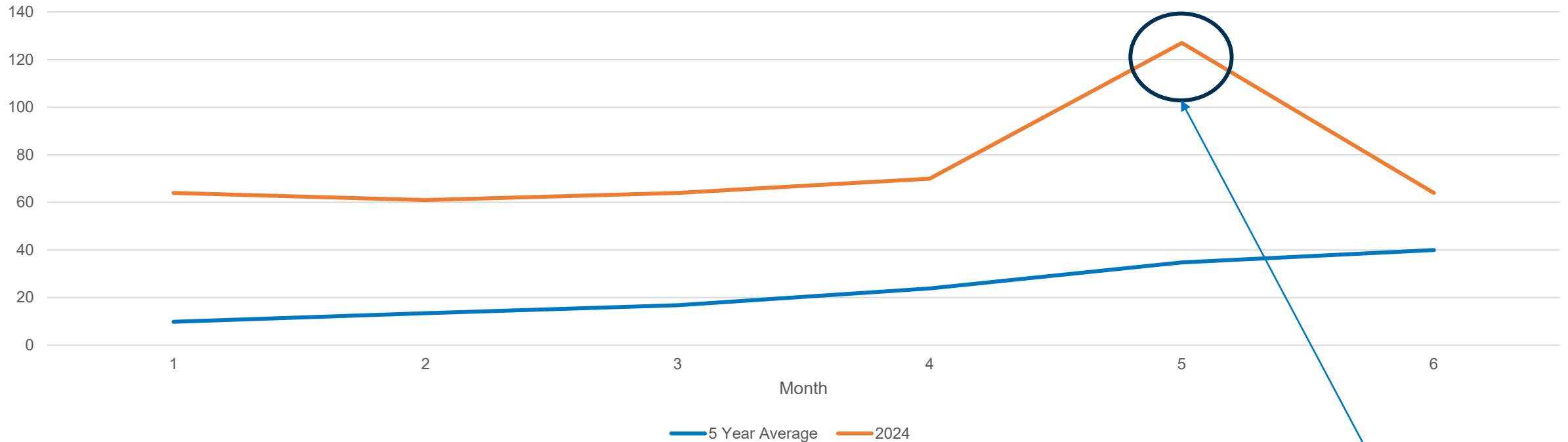
LES, City Collaboration: Heat Pump Incentives

HEAT PUMP INCENTIVES FOR 2024

- LES Incentives: \$800
- City Incentives
 - General Population: \$1,000 (Total \$274,000)
 - Low-to-Moderate Income: \$3,000 (Total \$183,000)
- Tax Credits: 30% up to \$2,000

PARTNERSHIP WITH CITY RESULTED IN A 225% INCREASE IN RESIDENTIAL HEAT PUMP INSTALLS YEAR TO DATE.

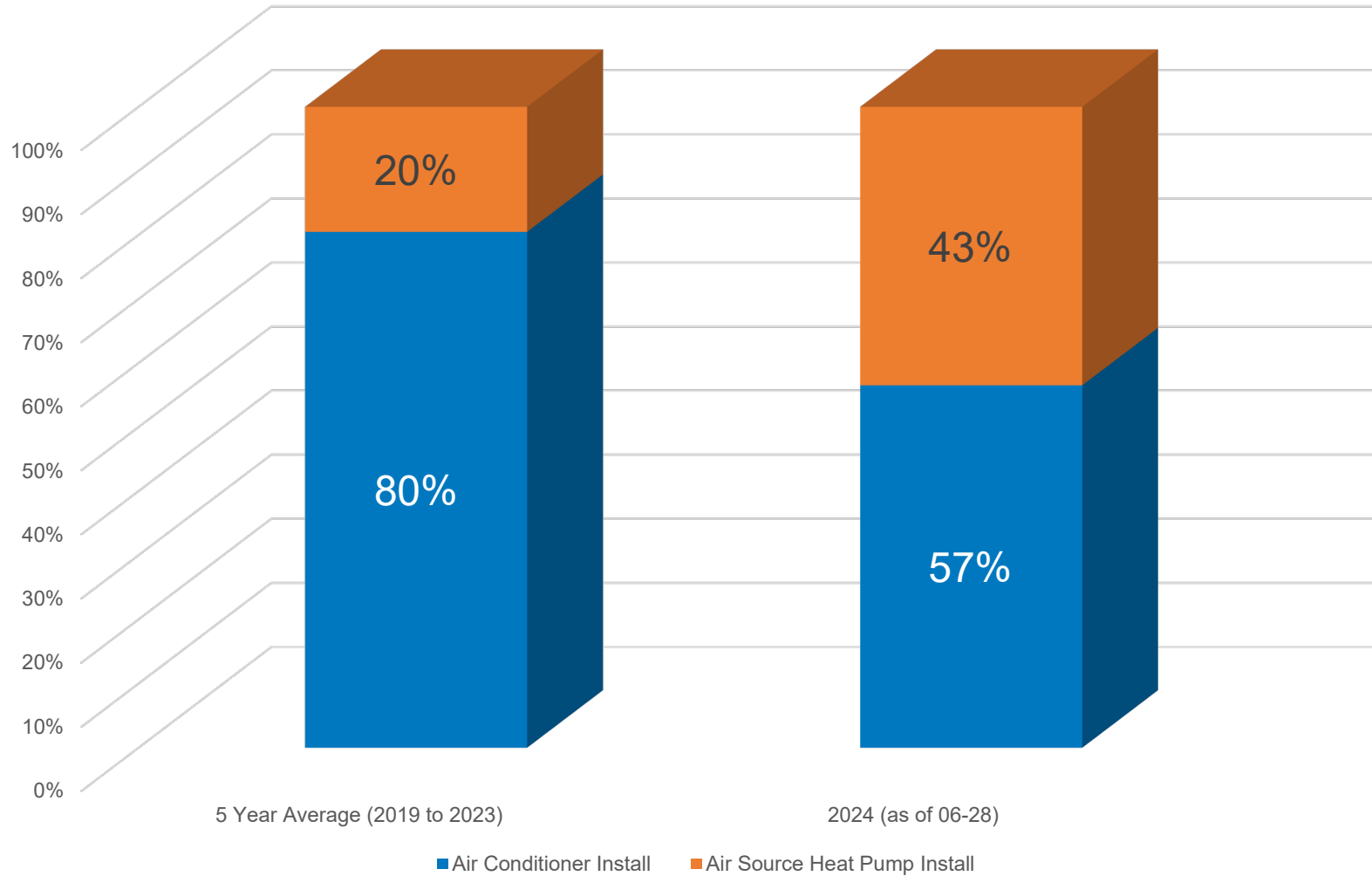
Residential Air Source Heat Pump Approvals Per Month



- Total residential heat pump installs incentivized in 2023 was 460. For 2024 (as of 6/28), we are at 450.
 - **However, only about 13% of heat pump installs in existing houses are replacing air conditioners.**

*We ran out of General Population City Funds on 5/21/24.

Residential Air Source Heat Pump and Air Conditioner Installs



Income-Qualifying and Vulnerable Households



Collaboration to assist energy
burdened continues

Income-Qualifying Projects Funding and Savings Projections

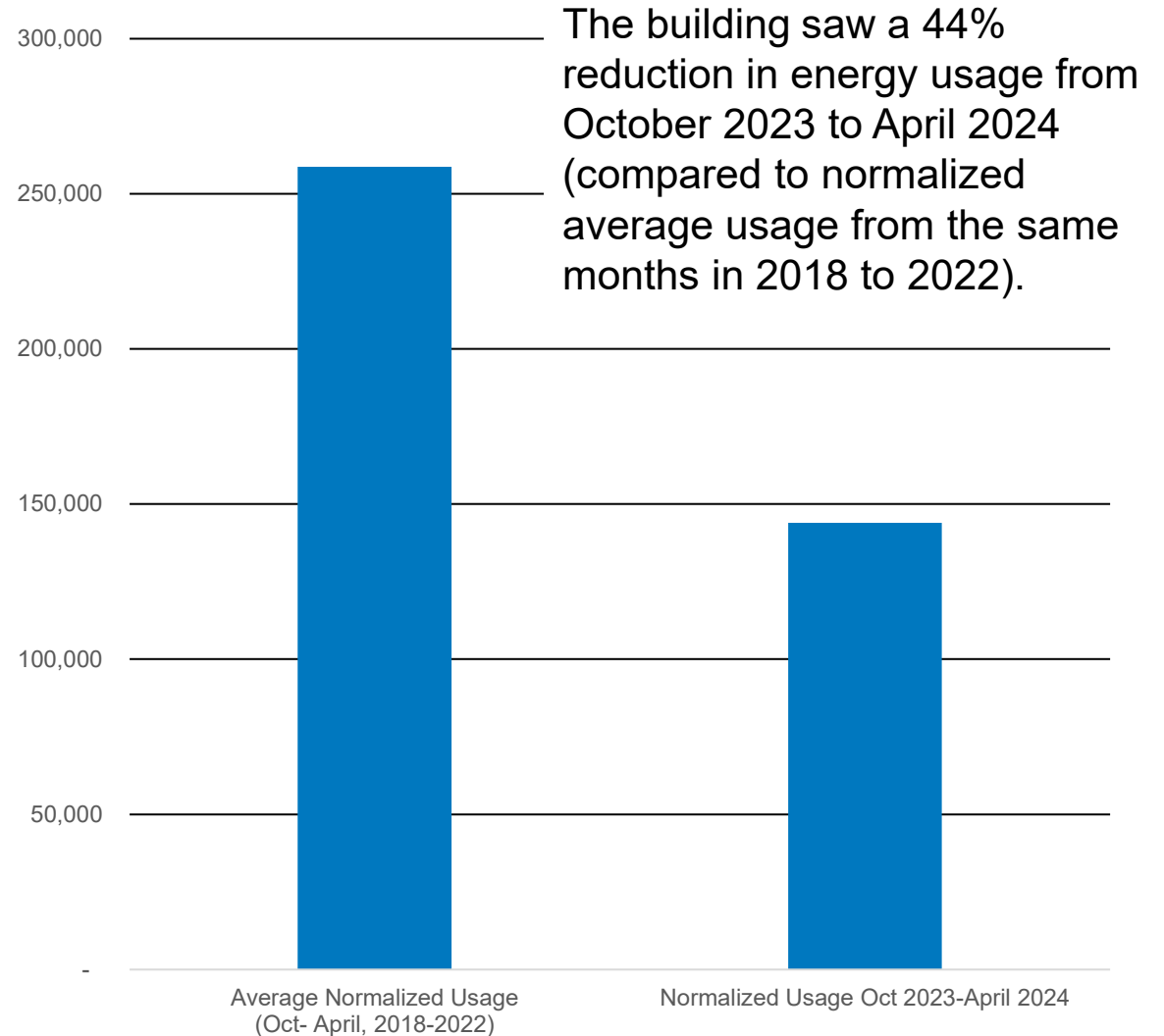
	Year-to-Date	2020-to-Date
Projects	11	95
LES Contribution	\$222,740	\$622,571
Partner Contribution	\$624,964	\$1,254,496
Projected Annual kWh	405,297	543,221
Projected Bill Savings per Customer in 2024	\$238	

*Significant increase from prior years due to multi-family projects.



1035 S 17th St

- **40 High Efficiency Heat Pumps Incentivized (22.5 SEER)**
 - **Replacing window ACs (10 SEER)**
 - **Estimated annual savings is expected to be over \$200/unit.**



Summary Headlines Recap



Obligated LES SEP incentives are 6% higher than last year



City partnership increased heat pump installs significantly



Peak demand reduction is close to Q1-Q2 target



Collaboration to assist energy burdened continues

Questions?